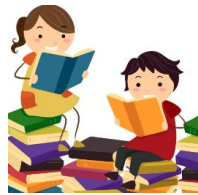


A Message from Mrs Moore

I hope everyone had a fantastic half term, it's been lovely to see all of the children back and eager to learn. This is a very busy half term leading up to the festivities of Christmas so please make a note of the key dates coming up.

Reading at home

It has been lovely to hear some of the children read this week and see all the updates on the Boom Reader reading record. Please read at least 3 times a week with your child and log it on the system. If the children read alone at home they should also be logging this on the system.



New PE Timetable for Autumn 2

As we have support from Nene Park Academy for teaching PE we will be changing PE days around regularly. Please see PE days commencing after half term.

Year 1	Monday & Tuesday
Year 2	Thursday & Friday
Year 3	Monday & Tuesday
Year 4	Tuesday & Wednesday
Year 5	Monday & Wednesday
Year 6	Wednesday & Thursday

PE kit:

Please can I remind you that the PE kits should be plain black or blue jogging bottoms, leggings, or shorts with a plain t-shirt white, black or blue and a plain black or blue jumper.

Children in Need

We will be fundraising for Children in Need on **Friday 17th November**. Children can wear non-school uniform and wear something spotty. We will be taking cash donations or you can donate electronically through the donation link <https://app.parentpay.com/ParentPayShop/Foc/Default.aspx?shopid=12658>



Maths Workshops

Miss Bishop, our school maths lead will be demonstrating our school calculation policy at the upcoming workshops on Monday 13th November (KS1) at 3:30pm and Wednesday 15th November (KS2) at 3:30pm. It would be great to see as many of you as possible so that you can practice some of the maths learning with the children at home.



Attendance

After four weeks in school our current school attendance is 95.5% Well done to the 82 children who currently have 100% attendance. Our academy target this year is to be at least 95% attendance with only 15% of the school with under 90% attendance (over 20 days off for the school year). Please remember to always let the office know your child is too unwell for school. If you have any questions regarding attendance please don't hesitate in contacting myself or Mrs French.



Breakfast with Mrs Moore

I will be holding my next event on **Tuesday 12th December** at the earlier time of **9:00am**. This is an opportunity for you to share any ideas you have for our school, give me any feedback and the opportunity to meet other parents. I'm keen to get a group together that can meet on a regular basis to support school improvement.

Please drop an email to the office (office@ormistonmeadows.co.uk) if you are interested in joining me.



Key Dates- Autumn Term

- Parents Evening - 6th & 7th November
- KS1 Maths Parent Workshop – 13th November 3:30pm
- KS2 Maths Parent Workshop – 15th November 3:30pm
- Year 2 Ferry Meadows Visit – 16th November
- Children in Need – Friday 17th November
- Teacher Training Day – School Closed– Monday 27th November
- Breakfast with Mrs Moore – Tuesday 12th December 9:00am
- Xmas Dinner & Xmas Jumper day – Wednesday 13th December
- Xmas Disco – Thursday 14th December