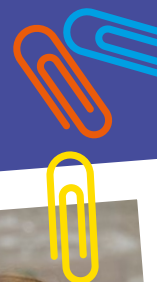


PROSPECTUS



[OAT]
Ormiston Academies Trust
AN OAT ACADEMY

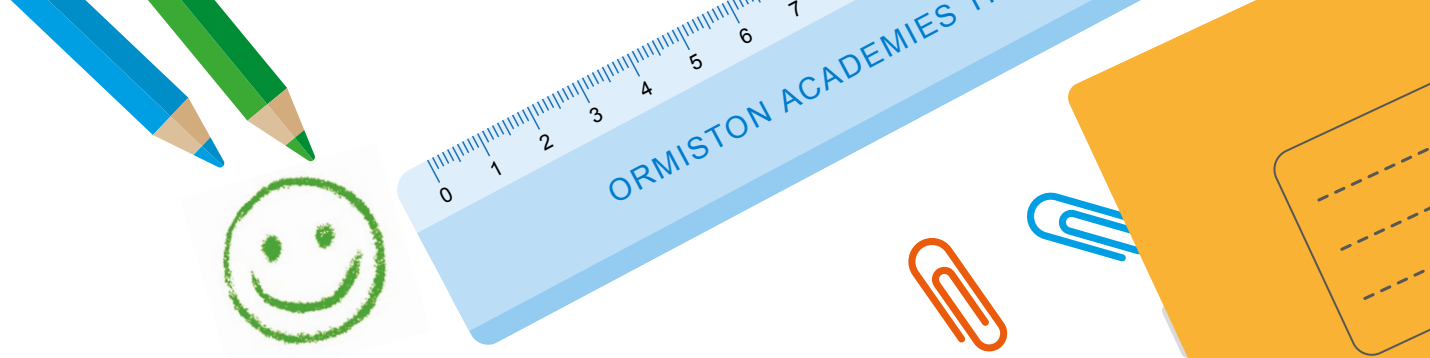
Be your Best, Expect the Best, Succeed Together

Ormiston Meadows Academy is a safe, inclusive, welcoming and nurturing school that offers a sense of belonging. We are a **good** school, aiming for greatness. We pride ourselves that we know each and every child inside out. We do our best to help each child find their strengths and talents so that they will flourish and be challenged.

We work with families to ensure that all children achieve their full potential across our diverse community, having relentlessly high expectations of ourselves and others. This is reflected in our fantastic results on Parent View where 100% of parents say they would recommend our school to other parents.

We are innovative, aspirational and consistent in our holistic approach, constantly reflecting on our practice. We try to make learning creative, stimulating, inclusive and fun with lots of challenge, setting ambitious goals for the future.





We offer our children a vast range of enrichment opportunities to light the spark of their learning, giving them the skills and tools they need to take off and fly, which aligns with our motto, 'Be your Best, Expect the Best, Succeed Together!' Happy children make good learners!

At our school, we are guided by four core values that shape every aspect of our community. **Excellence** drives us to achieve the highest standards in learning and personal growth. **Resilience** empowers our students to face challenges with determination and perseverance. We foster a culture of **respect**, where every individual is valued and differences are embraced. Above all, we promote a strong sense of **self-worth**, encouraging students to believe in their abilities and take pride in their achievements. Together, these values create a supportive and inspiring environment for all.

Our purpose-built nursery facility, run in partnership with a local provider, offers your child an excellent start to their educational journey.

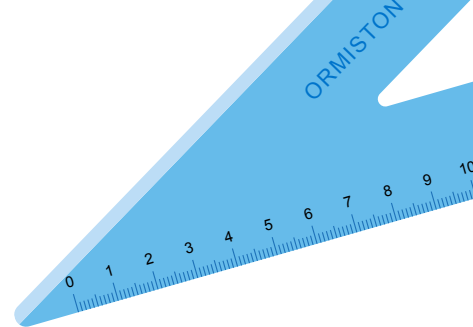
Thank you for your interest in Ormiston Meadows Academy.

Kelly Moore

Principal



our sponsor



Our school is proud to be part of Ormiston Academies Trust (OAT), one of the longest-established and largest school trusts in the country. Since 2009, OAT has been dedicated to transforming education, supporting over 35,000 pupils in 40+ schools with over 5,000 staff – across secondary, primary, alternative provision and special schools.

With schools across England, from Lowestoft and the Isle of Wight to Grimsby, Runcorn, London and the West Midlands, OAT serves a diverse range of communities. This national reach reflects the Trust's commitment to providing excellent learning opportunities for every child, regardless of background or location.



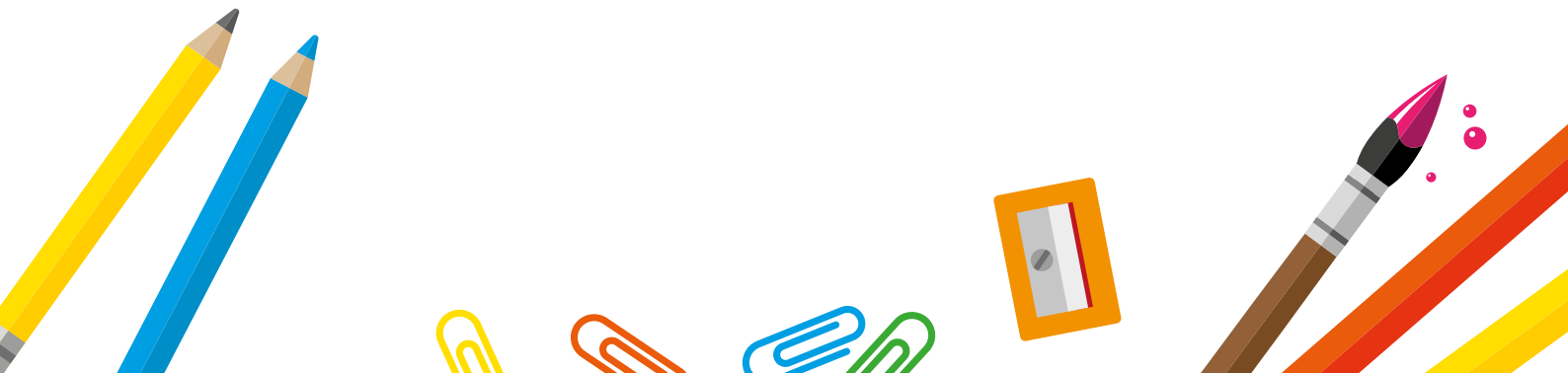
At the heart of Ormiston's rich history and the strong values that underpin everything they do, is a simple yet powerful vision: a school system where every child can thrive. The Trust's mission is to ensure every child has excellent learning opportunities, inside and outside of the classroom, which enrich their lives and afford them choice and opportunity in the future.

“

Our mission is to ensure every child has excellent learning opportunities, inside and outside of the classroom.

Tom Rees

CEO Ormiston Academies Trust





Excellence

We will encourage excellence and high achievement.

We believe that excellence can be achieved. We recognise and appreciate excellence in everything that we do. We understand that excellence is achieved through hard work and dedication.

Excellence is not about being the best but doing your best. We value the efforts of all our pupils and celebrate their successes, no matter what they may be. We provide a stimulating environment for children which supports learning, enabling everyone to succeed.

We promote enrichment activities that enable our pupils to excel. For example, our choir is consistently successful, competing in both local and national events.

Our belief in our pupils' abilities has resulted in a sustained upward trend in achievement.

“

Curriculum plans are well organised and clarify exactly what knowledge pupils should learn.

Ofsted, 2024





Resilience

We will encourage resilience in our learners.

Our aim is for your child to grow up with the idea that anything is possible. Our curriculum balances academic achievement with skills development, enabling our pupils to develop their resilience and determination to achieve their goals.

We are committed to ensuring that your child has the best possible learning environment to aim high and achieve their potential. We foster the belief that children can learn anything if they put in the hard work and practice.

“

Staff consistently teach the curriculum well. They check what pupils remember and provide timely support if pupils show signs of not keeping up. Pupils learn the knowledge and skills in the curriculum and are ready for their next steps in education.

Ofsted, 2024





Respect



We will encourage respectful and caring citizens.

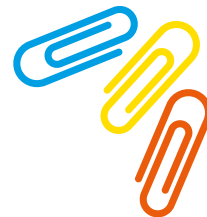
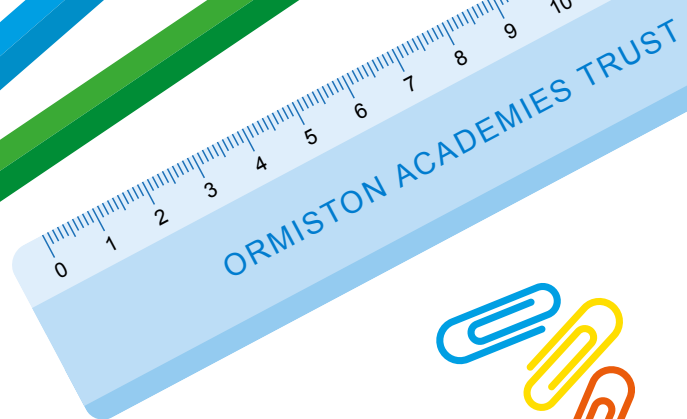
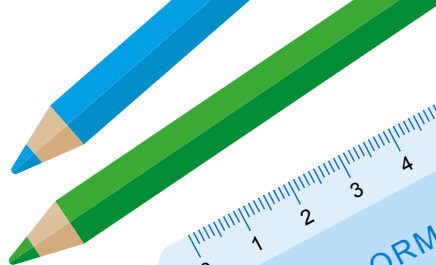
At Ormiston Meadows Academy, respect is central to our core values, and a key behaviour we develop with our pupils. As children grow older, they learn that their behaviours have an effect on their own rights and those of others.

All members of the school community treat each other with respect.

We take pride in modelling manners and being courteous to each other. This is frequently commented on by visitors.

Our weekly "Celebration Assemblies" promote individual achievement, as well as developing our core value of **respect** for one another's achievements.





“

The school prepares pupils well for life in the wider world. Starting at an early age, pupils consider potential career options through the well-established careers education programme at the school. Pupils also understand fundamental British values such as democracy.

Ofsted, 2024





Self-worth

We will encourage self-worth to develop confident individuals.

Self-worth is crucial if we, as humans, are to achieve our potential. We acknowledge that there are times when self-belief is weakened and we strive to embed a sense of self-worth, love of self, and understanding of the very important part each and every one of us plays in the lives of others.

Your child will be actively encouraged to develop a positive attitude, and to make choices, knowing that they are in a safe and supportive environment. We challenge our children to want to fulfil their potential and respond to their own next steps so that they meet their personal best.

Our high expectations for all pupils ensure they can achieve their potential and feel proud of their success.

“

Pupils thrive in the school's welcoming ethos. They develop a sense of self-worth and are sensitive to the needs of others. This is beneficial for the many pupils with special educational needs and/or disabilities (SEND). Those who access support for physical disabilities play an active part in the school community.

Ofsted, 2024







Ormiston Meadows Academy
Matley,
Orton Brimbles,
Peterborough,
PE2 5YQ

01733 231 008
office@ormistonmeadows.co.uk
ormistonmeadows.co.uk

 [people/Ormiston-Meadows-Academy/100045855321572/](https://www.facebook.com/people/Ormiston-Meadows-Academy/100045855321572/)

 [@OrmistonMeadows](https://twitter.com/OrmistonMeadows)

[OAT]
Ormiston Academies Trust
AN OAT ACADEMY